

## *CNS practical*

Which of the following color blindness is the most common?

Select one:

- a. deuteranomaly
- b. tritanomaly
- c. protanomaly
- d. protanopia
- e. trichromat

Which of the followings we do not need to wait at least 15 minutes before taking the temperature?

Select one:

- a. drinking
- b. brushing his teeth
- c. eating
- d. smoking
- e. mouth breathing

Normally 2 to 4 mm of separation of the two points discrimination is appreciated on

Select one:

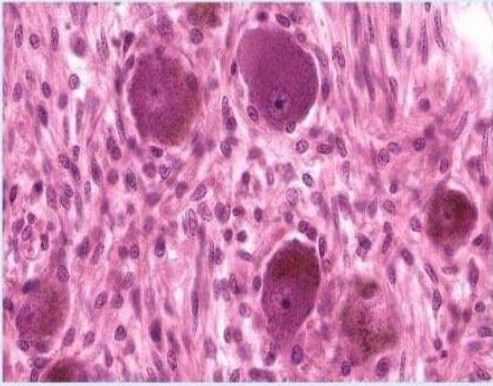
- a. upper chest
- b. the palmar surfaces of the thumb
- c. forearm
- d. lower limb
- e. umbilicus

Attenuation reflex is related to

Select one:

- a. organ of Corti
- b. middle ear ossicles
- c. inner ear
- d. ear pinna
- e. tympanic membrane

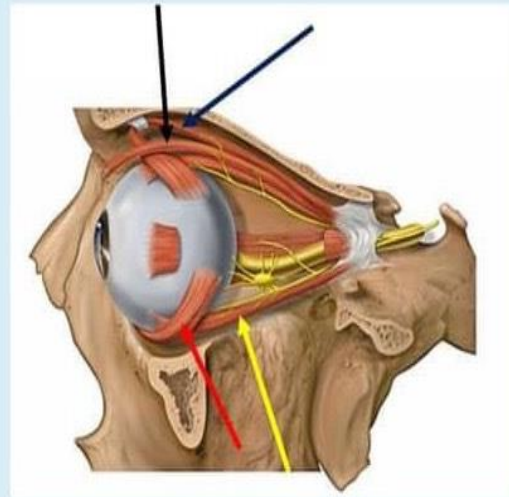
# CNS practical



Which of the following is INCORRECT about this type of ganglia

اختر أحد الخيارات

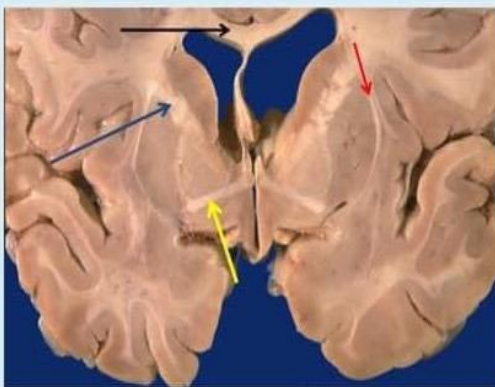
- a. Neurons are surrounded by fewer satellite cells
- b. It is a sensory ganglion
- c. Neurons are less organized & are widely dispersed
- d. Neurons have small eccentrically located nuclei
- e. It has less distinct CT capsule



Which of the following arrows points to a muscle that can abduct and depress the eyeball?

Select one:

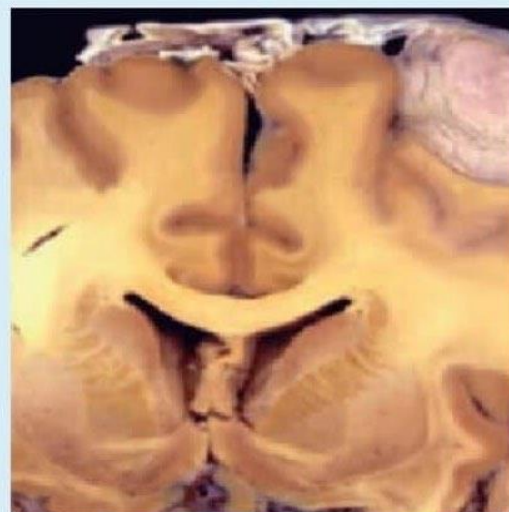
- a. Red arrow
- b. Black arrow
- c. Yellow arrow
- d. Blue arrow



Which of the following arrows points to projection fibers?

Select one:

- a. Yellow arrow
- b. Blue arrow
- c. Red arrow
- d. Black arrow



Which of the following is the most likely diagnosis?

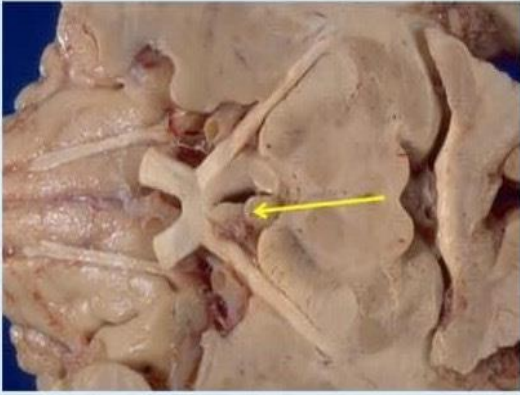
Select one:

- a. Ependymoma
- b. Pilocytic astrocytoma
- c. Medulloblastoma
- d. Glioblastoma
- e. Schwannoma

Correct answer:  
Meningioma



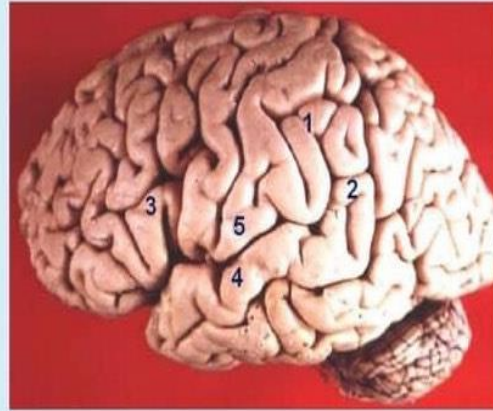
# CNS practical



Which of the following represent the pointed structure?

Select one:

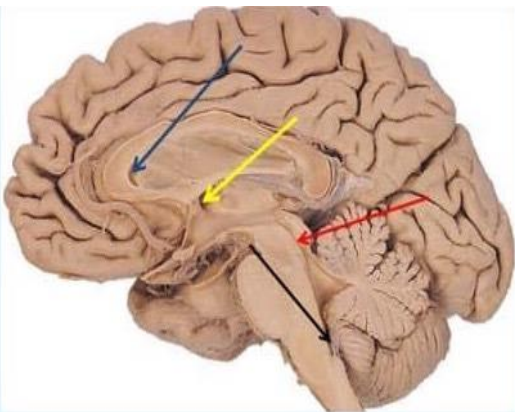
- a. Mamillary body
- b. Subthalamic nucleus
- c. Inferior colliculus
- d. Superior colliculus
- e. Pineal gland



Which of the labeled structures represent the gustatory area?

Select one:

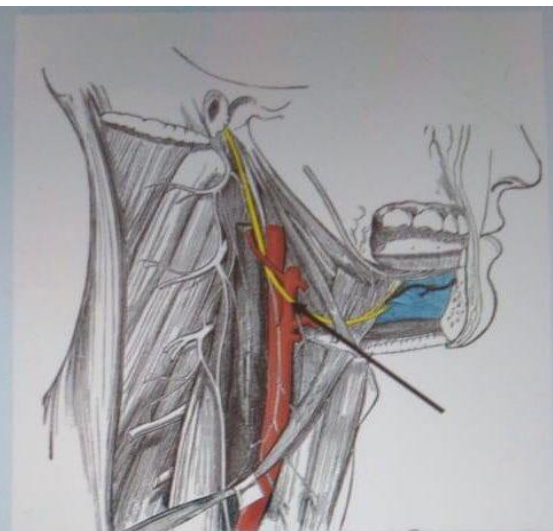
- a. 4
- b. 5
- c. 1
- d. 3
- e. 2



Which of the following arrows points to the foramen of Monro?

Select one:

- a. Yellow arrow
- b. Black arrow
- c. Blue arrow
- d. Red arrow

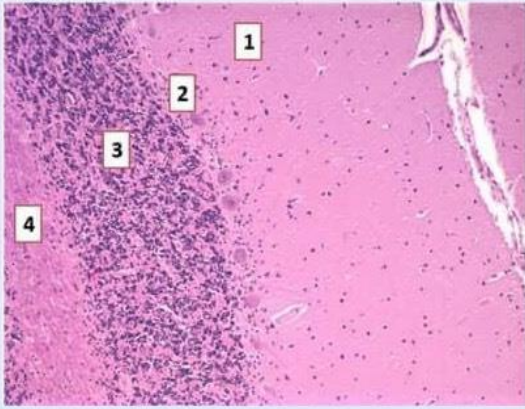


Which of the following represents the pointed nerve?

Select one:

- a. Hypoglossal
- b. Transverse cervical
- c. Glossopharyngeal
- d. Lingual
- e. Cervical branch of facial

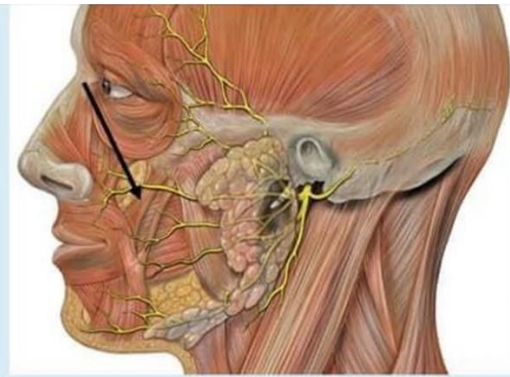
# CNS practical



Which of the following labeled layers is white matter

Select one:

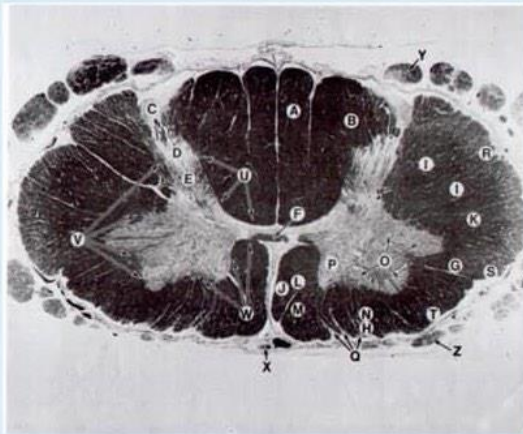
- a. 4
- b. 1
- c. 3
- d. 2



Which of the following represents the pointed muscle?

Select one:

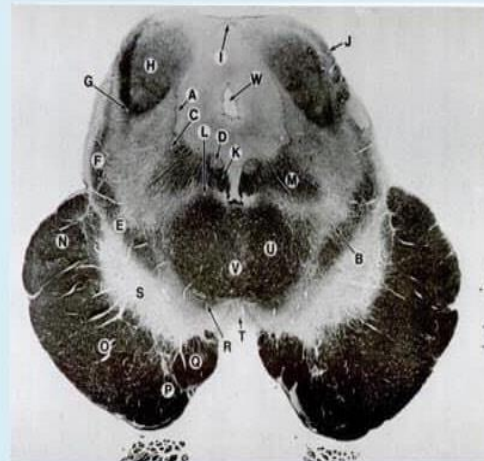
- a. Levator labii superioris
- b. Levator anguli oris
- c. Zygomaticus major ← Both were considered correct
- d. Zygomaticus minor ←
- e. Risorius



Which of the following structures is labeled by "J" in this section?

Select one:

- a. Gracile fasciculus
- b. Gray commissure
- c. Anterior spinal artery
- d. Ventral spinocerebellar tract
- e. Anterior corticospinal tract



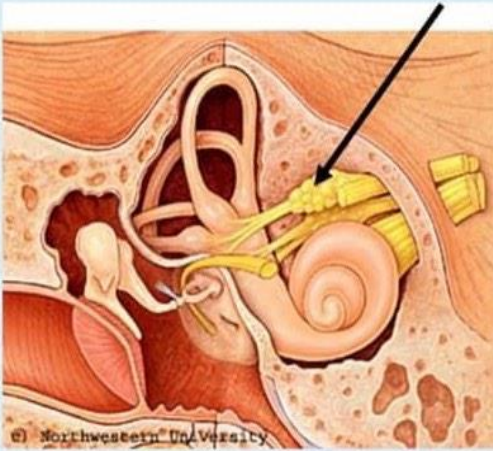
Which of the following structures is labeled by "S" in this section?

Select one:

- a. Red nucleus
- b. Substantia nigra
- c. Medial lemniscus
- d. Superior cerebellar peduncle
- e. Crus cerebri



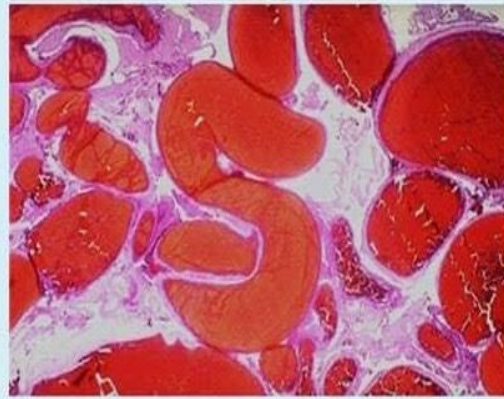
# CNS practical



Which of the following represent the pointed structure?

Select one:

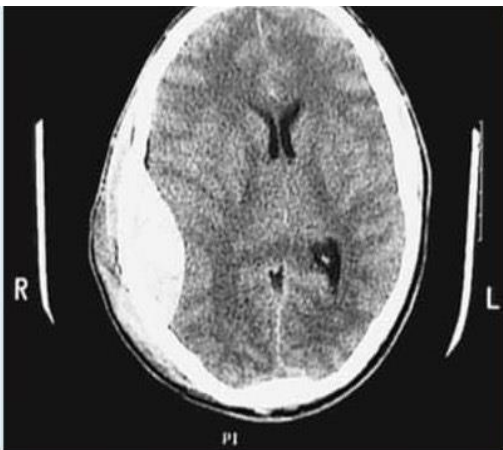
- a. Ciliary ganglion
- b. Spiral ganglion
- c. Vestibular ganglion
- d. Geniculate ganglion
- e. Mastoid lymph node



Which of the following is the diagnosis in this figure?

Select one:

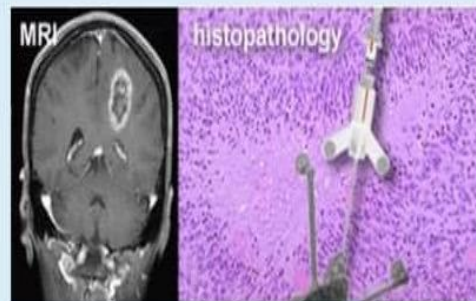
- a. Intraventricular hemorrhage
- b. Intraparenchymal hemorrhage
- c. AV malformation
- d. Subdural hematoma
- e. Berry aneurysm



Which of the following is the diagnosis in this figure?

Select one:

- a. Subarachnoid hemorrhage
- b. Subdural hematoma
- c. Intraventricular hemorrhage
- d. Epidural hematoma
- e. Intraparenchymal hemorrhage



Which of the following is the most likely diagnosis?

Select one:

- a. Osteosarcoma
- b. Brain abscess
- c. Glioblastoma
- d. Ependymoma
- e. Meningioma